



# MONTHLY MEMBERSHIP PROGRESS REPORT

District 323 G2

Results as of: 12/31/2015

GMT: KAMLESH JAIN

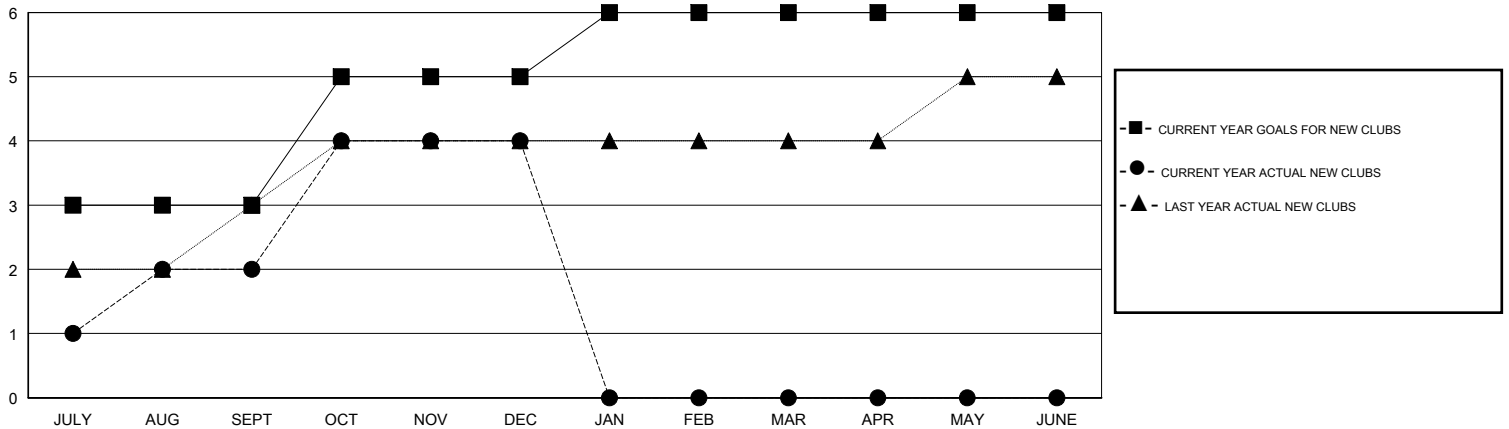
LOCATION INDIA

GMT CA 6

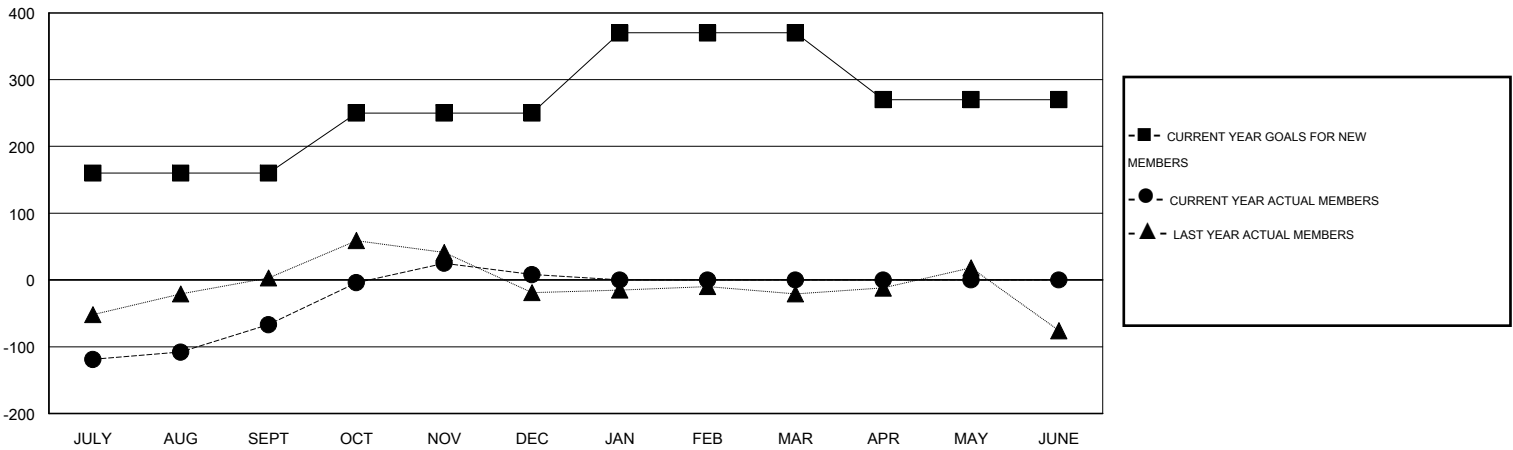
Clubs				
RESULTS FOR 2015-2016				
QUARTER	NEW CLUB GOAL	NEW CLUBS	DROPPED CLUBS	NET GAIN/LOSS
JULY/AUG/SEPT	3	2	0	2
OCT/NOV/DEC	2	2	0	2
JAN/FEB/MAR	1	0	0	0
APR/MAY/JUNE	0	0	0	0

Members				
RESULTS FOR 2015-2016				
QUARTER	NEW MEMBER GOAL	CHARTER AND NEW MEMBERS ADDED	DROPPED MEMBERS	NET GAIN/LOSS
JULY/AUG/SEPT	160	123	190	-67
OCT/NOV/DEC	90	111	36	75
JAN/FEB/MAR	120	0	0	0
APR/MAY/JUNE	-100	0	0	0

GOALS AND ACTUAL NEW CLUBS CUMULATIVE



GOALS AND ACTUAL MEMBERS CUMULATIVE



DROPPED CLUBS: 0
------------------

41 CLUBS OF 109 ADDED 1 OR MORE NEW MEMBERS

GENDER DISTRIBUTION	
MALE	1,782 (74.69%)
FEMALE	604 (25.31%)

DROPPED MEMBERS	
DECEASED	4
CLUB CANCELLED	0
OTHER	222
<b>TOTAL</b>	<b>226</b>

[CLICK HERE FOR HEALTH ASSESSMENT DATA](#)

FAMILY UNIT MEMBERS	686
HEAD OF HOUSEHOLD	314
NON-HEAD OF HOUSEHOLD	372